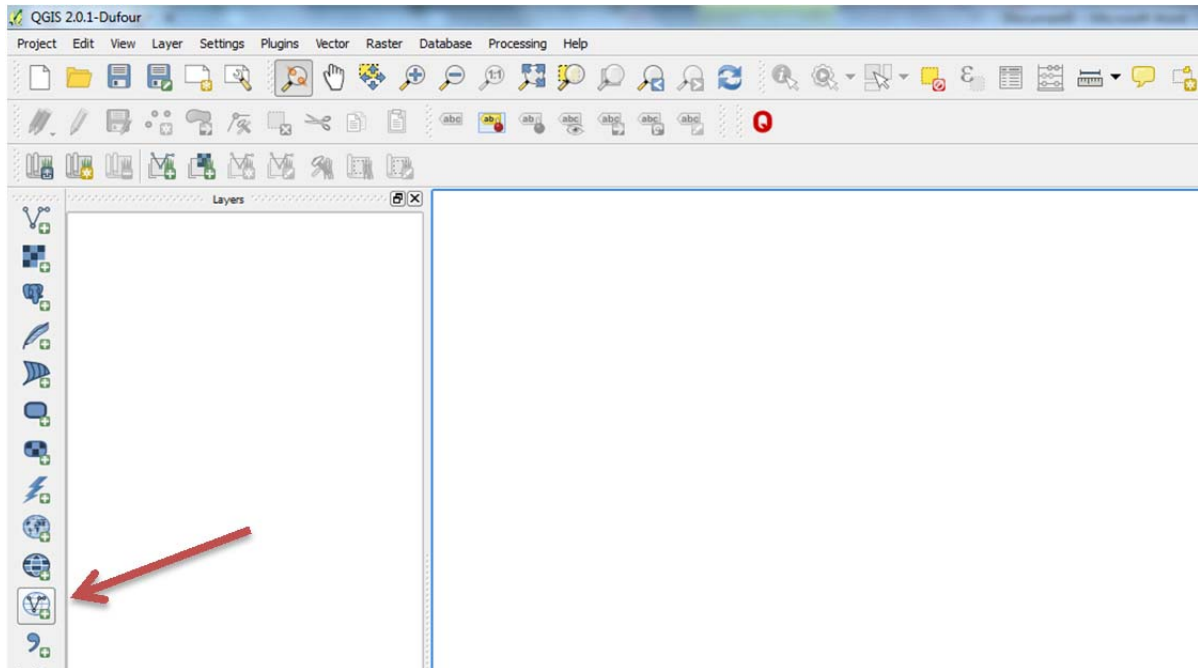


# Quantum GIS

Korištenje WFS servisa u Quantum GIS aplikaciji

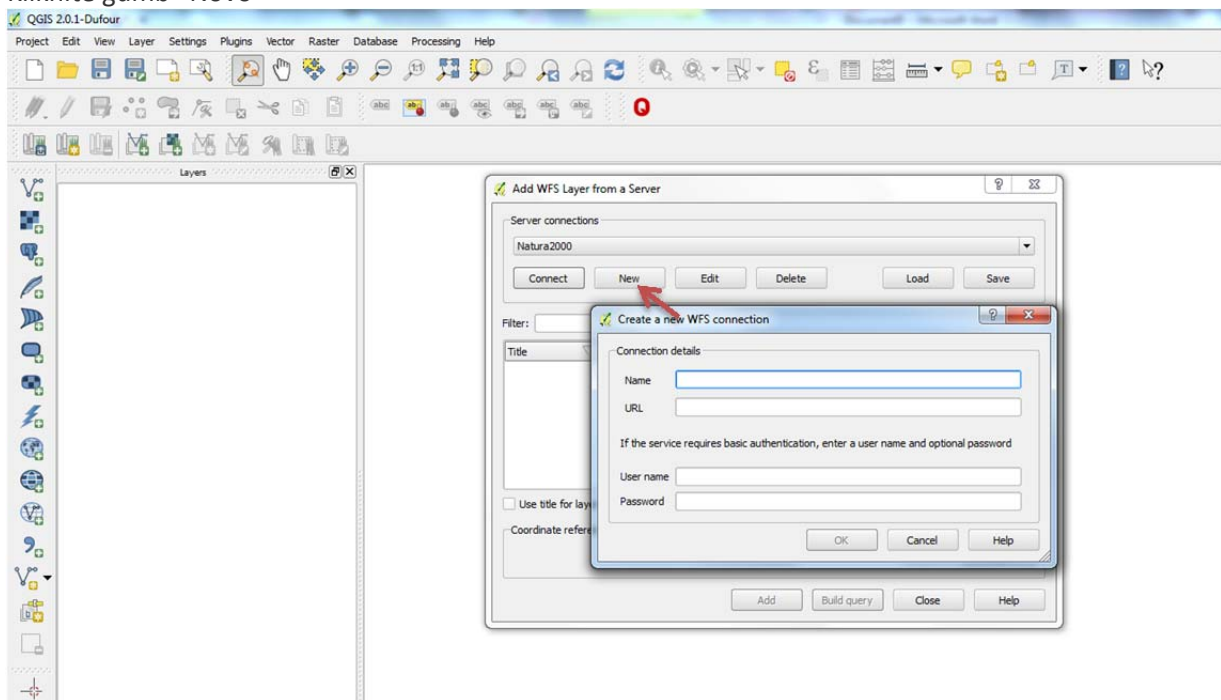
## 1. KORAK

Kliknite na ikonu “Dodaj WFS sloj”.



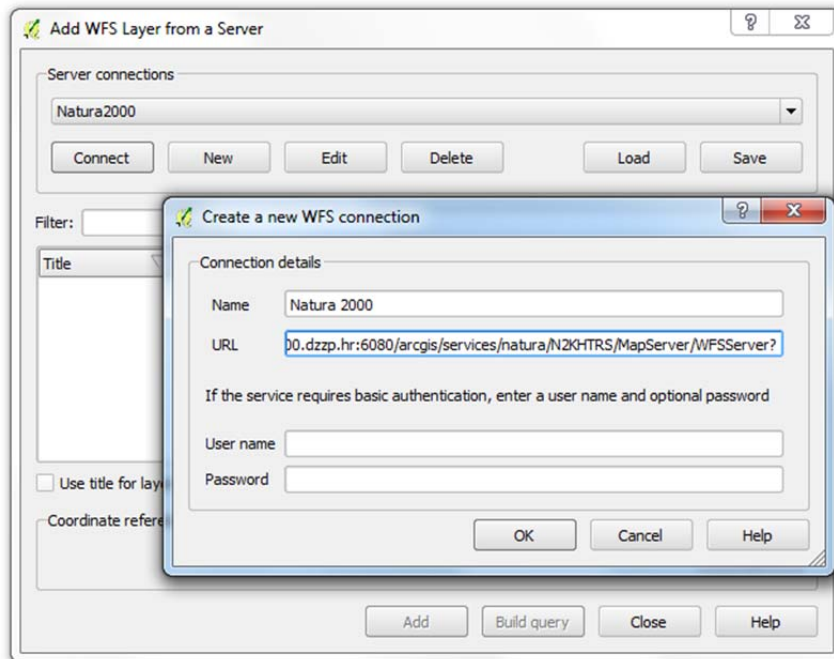
## 2. KORAK

Kliknite gumb “Novo”



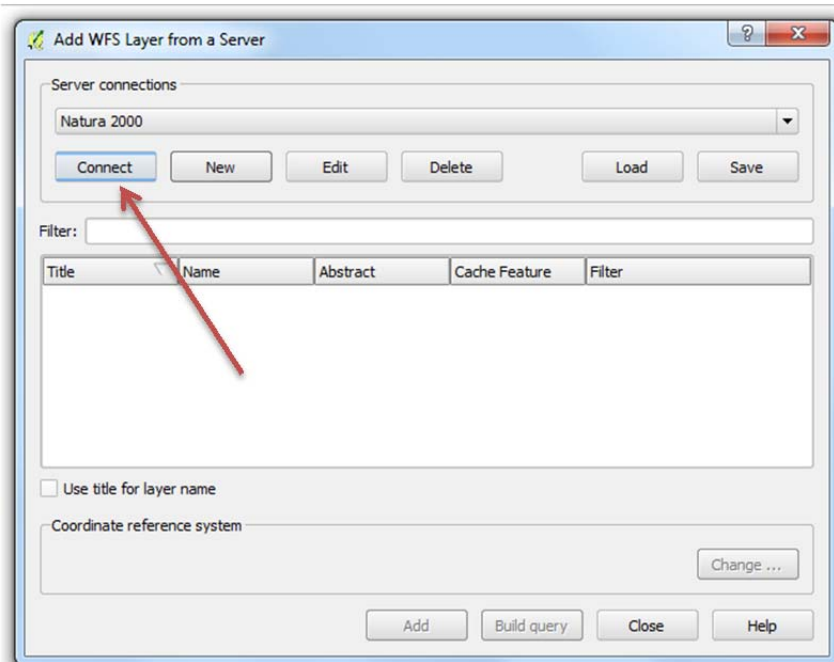
### 3. KORAK

Pod Naziv upišite željeni naziv, a pod URL link do WFS servisa



### 4. KORAK

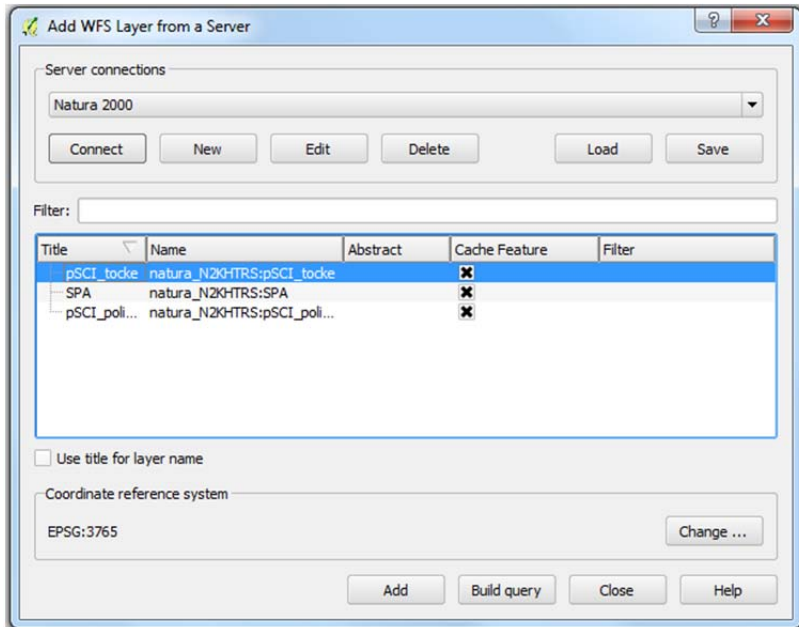
Kliknite tipku "Poveži"



## 5. KORAK

Iz popisa slojeva odaberite željeni sloj. Za koordinatni referentni sustav odaberite HTRS96/TM, ako već nije odabran.

Zatim kliknite "Dodaj" i "Close".



## 6. KORAK

Željeni sloj će se pojaviti na ekranu.

